



## A LOOK BACK AT 2024

## RAFFLE PRIZES

Do you have any unwanted, unused items that you would consider donating to Headway Rotherham for raffle prizes. Maybe an unwanted Christmas Gift?

Please note: donations must be unused and in date.

We would really appreciate your help with this as the raffles bring in much needed funds to help run our activities. Thank you.

### Your Privacy and GDPR

Thank you for sharing your email and contact details with Headway Rotherham. We use your information to keep in touch and will not pass it on to any third parties. It will be used only to share news of the group activities and between the Trustees and yourself. Your information is kept safe and is password protected on our group list and your paper form with your contact details is also kept safe. If you have any questions or concerns please get in touch with us. Best Wishes, Headway Rotherham

Headway Rotherham's Newsletter can be viewed on our Website along with much more information about our service. [www.headwayrotherham.org.uk](http://www.headwayrotherham.org.uk).

If you wish to view our Code of Conduct please find it on our website [About Us – Headway Rotherham](#)

# Newsletter

J  
A  
N  
U  
A  
R  
Y  
  
2  
0  
2  
5

## HEADWAY HUB



Social Prescribing Hub, Barbers Avenue,  
Rawmarsh,

EVERY WEDNESDAY 1.15 PM — 3 PM

## THIS MONTH'S ACTIVITIES INCLUDE

8th— Quiz



15th— Category Game



22nd — Bingo



29th—Craft

£3 per person



## Headway Rotherham

Headway Rotherham  
Victoria Park Hall  
Victoria Rosehill Park  
Rawmarsh  
Rotherham  
S62 7HJ

Office 01709-524100

Website: [www.headwayrotherham.org.uk](http://www.headwayrotherham.org.uk)

E-Mail: [info@headwayrotherham.org.uk](mailto:info@headwayrotherham.org.uk)

Find us on Facebook—Headway Rotherham

Twitter—@Headway\_Roth

Charity No: 1097470

Headway UK—Free helpline 0808 800 2244 -[helpline@headway.org.uk](mailto:helpline@headway.org.uk)



## TEN PIN BOWLING

Rotherham Superbowl  
Wortley Road, Kimberworth, Rotherham, S61 1QN

**Tuesday 7th January—2pm**

£5 per person

**CASH PAYMENT ONLY**  
To be paid on the day please



Please inform Sadie if you have difficulty with stairs and she will arrange an alternative entrance

## SNOOKER

Brecks Snooker Club  
1A Brecks Crescent, Rotherham, S65 3HZ

**Monday 27th January—10am**

£5 per person



## COFFEE MORNING

Caffe Cristinacce.

Homeflair Complex, Rawmarsh Road Parkgate S60 1RZ

**Monday 13th January -11am**

(Payment of refreshments on the day)



## WALK AROUND CLIFTON PARK

FOLLOWED BY A CUPPA IN THE CAFÉ

**Tuesday 28th January 11am**

The walk is suitable for wheelchairs and mobility scooters.



## CARERS' LUNCH

For family members of brain injury survivors

The Riverside  
Sheffield Road, Rotherham, S60 1FL

**Tuesday 14th January 1pm**

(Payment of refreshments on the day)



## CRAFT SESSION WITH ARTWORKS

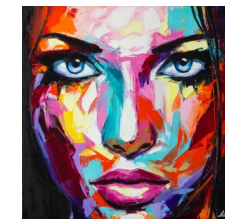
Brook Hill, Thorpe Hesley, Rotherham S61 2QF

**Monday 3rd February—10.30am—2pm**

With 1 hour for lunch (Please bring a packed lunch)

**Abstract portrait painting**

Free Session. Places are very limited. So first come first served.



## MEAL & QUIZ

The Brentwood  
Moorgate Road, Rotherham,  
S60 2TY



**Tuesday 21st January—1pm**

(Payment of refreshments on the day)



## BOOKING ACTIVITIES

To secure your place on any of the activities

Text, Whatsapp, email or call Sadie and leave a message

[Info@headwayrotherham.org.uk](mailto:Info@headwayrotherham.org.uk) – Tel: 07925224461

All activities need to be paid for before the date to secure your place (unless otherwise stated)